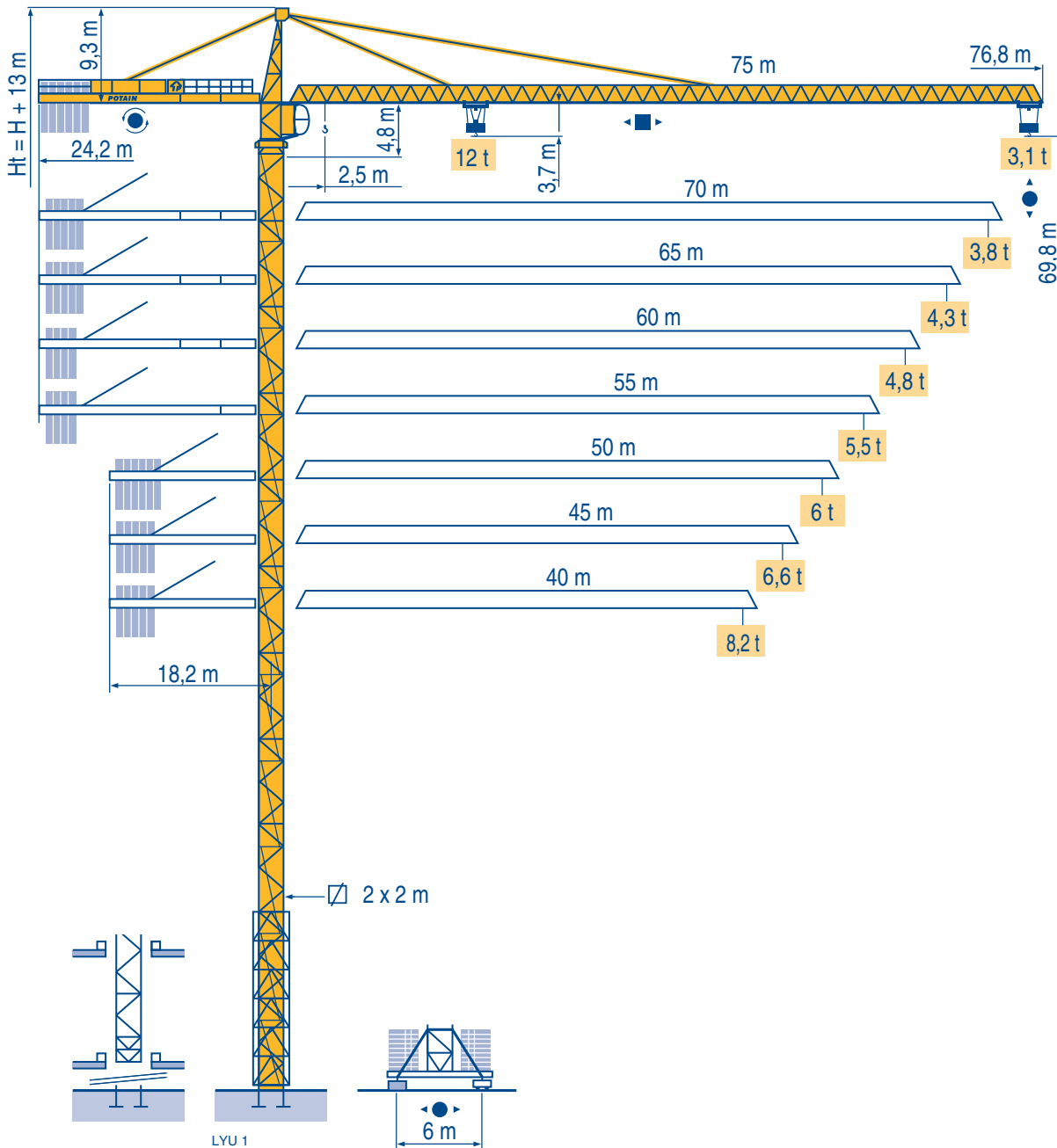


# MD 345 B L12

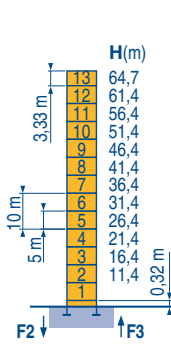


**TOPKIT**

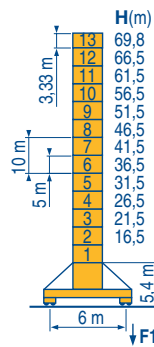
**CE** FEM 1.001-A3

Mat / Réactions  $\square$  2 m  
 Maste / Eckdrücke  $\triangle$  40 m  $\Rightarrow$  75 m  
 Masts / Reactions  
 Mástil / Reacciones  
 Torre / Reazioni  
 Tramo / Reações

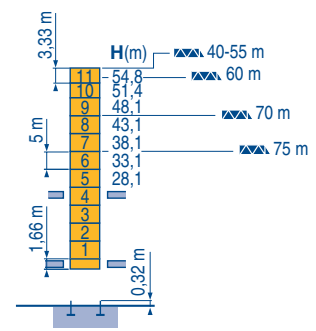
LYU 1



P 60 A	
F2	● 204 t
	■ 218 t
F3	● 137 t
	■ 158 t
	▲ 99 t



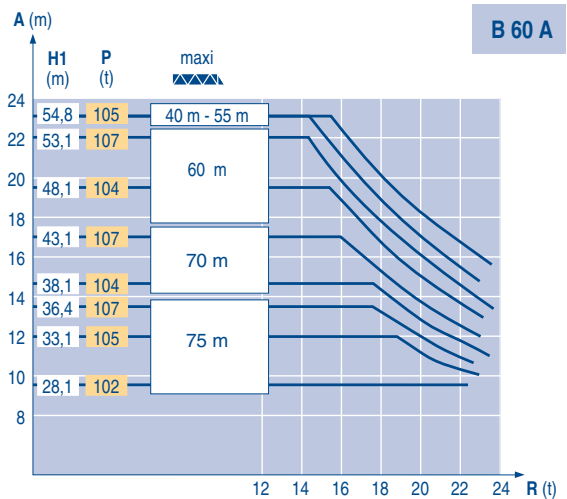
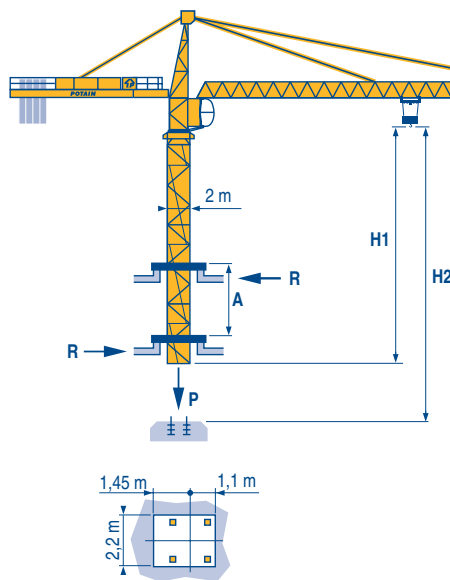
V 60 A	
F1	● 127 t
	■ 139 t
	▲ 111 t



B 60 A	
	▲ 111 t

Télescopage sur dalles  
 Kletterkrane im Gebäude  
 Climbing crane  
 Telescopage gruas trepadoras  
 Gru in cavedio  
 Telescopagem sobre lages

LYU 1



TOPKIT  
 MD 345 B L12

POTAIN

F	D	GB	E	I	P
● Réactions en service	● Reaktionskräfte in Betrieb	● Reactions in service	● Reacciones en servicio	● Reazioni in servizio	● Reações em serviço
■ Réactions hors service	■ Reaktionskräfte außer Betrieb	■ Reactions out of service	■ Reacciones fuera de servicio	■ Reazioni fuori servizio	■ Reações fora de serviço
A vide sans lest (ni train de transport) avec flèche et hauteur maximum.	Ohne Last, Ballast (und Transportachse), mit Maximalausleger und Maximalhöhe.	Without load, ballast (or transport axles), with maximum jib and maximum height.	Sin carga, sin lastre, (ni tren de transporte), flecha y altura máxima.	A vuoto, senza zavorra (ne assali di trasporto) con braccio massimo e altezza massima.	Sem carga (nem trem de transporte)- sem lastro com lança e altura máximas.
Nous consulter	Auf Anfrage	Consult us	Consultarnos	Consultateci	Consultar-nos

**Curbes de charges**

**Lastkurven**

**Load diagrams**

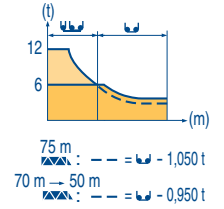
**Curvas de cargas**

**Curve di carico**

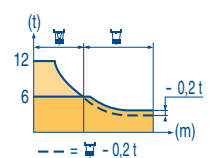
**Curva de cargas**

LVU 1

75 m	2,5	▶ 22,9	25	27	30	32	35	37	39,2	44,7	47	50	52	55	57	60	62	65	67	70	72	75 m
▲▲	▲▲	12	10,8	9,8	8,6	7,9	7	6,5	6	6	5,6	5,2	5	4,7	4,4	4,2	4	3,8	3,6	3,4	3,3	3,1 t
70 m	2,5	▶ 24,7	27	30	32	35	37	40	42,7	48,3	50	52	55	57	60	62	65	67	70 m			
▲▲	▲▲	12	10,8	9,5	8,7	7,8	7,3	6,5	6	6	5,8	5,5	5,1	4,9	4,6	4,4	4,2	4	3,8			
65 m	2,5	▶	25,1	27	30	32	35	37	40	42	44	49,2	52	55	57	60	62	65 m				
▲▲	▲▲	12	11	9,7	9	8	7,5	6,8	6,4	6	6	5,6	5,3	5	4,7	4,6	4,3	t				
60 m	2,5	▶	25,4	27	30	32	35	37	40	42	44,5	49,7	52	55	57	60 m						
▲▲	▲▲	12	11,2	9,8	9,1	8,1	7,6	6,9	6,5	6	6	5,7	5,3	5,1	4,8	t						
55 m	2,5	▶	26,1	27	30	32	35	37	40	42	45	45,7	51,1	52	55 m							
▲▲	▲▲	12	11,5	10,2	9,4	8,4	7,9	7,1	6,7	6,1	6	6	5,9	5,5	t							
50 m	2,5	▶	26,6	30	32	35	37	40	42	45	47	50 m										
▲▲	▲▲	12	10,4	9,6	8,6	8	7,3	6,8	6,3	5,9	5,45	t										
45 m	2,5	▶	27,6	30	32	35	37	40	42	45 m												
▲▲	▲▲	12	10,9	10,1	9	8,4	7,7	7,2	6,6	t												
40 m	2,5	▶	29,2	30	32	35	37	40 m														
▲▲	▲▲	12	11,6	10,7	9,7	9	8,2	t														



75 m	2,7	▶ 23,4	25	27	30	32	35	37	40,7	41,9	45	47	50	52	55	57	60	62	65	67	70	72	75 m
▲▲	▲▲	12	11,1	10,1	8,9	8,2	7,3	6,8	6	6	5,5	5,2	4,7	4,5	4,2	4	3,7	3,5	3,3	3,1	2,9	2,8	2,6 t
70 m	2,7	▶	25	27	30	32	35	37	40	43,8	45,2	47	50	52	55	57	60	62	65	67	70 m		
▲▲	▲▲	12	11	9,7	8,9	8	7,5	6,8	6	6	5,7	5,3	5	4,6	4,4	4,1	3,9	3,7	3,5	3,3	t		
65 m	2,7	▶	25,3	27	30	32	35	37	40	42	44,6	46	50	52	55	57	60	62	65 m				
▲▲	▲▲	12	11,1	9,8	9,1	8,1	7,6	6,9	6,5	6	6	5,4	5,1	4,8	4,5	4,2	4,1	3,8	t				
60 m	2,7	▶	25,8	27	30	32	35	37	40	42	45,6	47,1	50	52	55	57	60 m						
▲▲	▲▲	12	11,4	10	9,3	8,3	7,8	7,1	6,7	6	6	5,6	5,3	4,9	4,7	4,4	t						
55 m	2,7	▶	26,5	27	30	32	35	37	40	42	45	46,9	48,3	52	55 m								
▲▲	▲▲	12	11,7	10,4	9,6	8,6	8,1	7,3	6,9	6,3	6	6	5,5	5,1	t								
50 m	2,7	▶	27	30	32	35	37	40	42	45	47,8	49,3	50 m										
▲▲	▲▲	12	10,6	9,8	8,8	8,3	7,5	7,1	6,5	6	6	5,9	t										
45 m	2,7	▶	28,1	30	32	35	37	40	42	45 m													
▲▲	▲▲	12	11,1	10,3	9,2	8,6	7,9	7,4	6,8	t													
40 m	2,7	▶	29,7	30	32	35	37	40 m															
▲▲	▲▲	12	11,9	11	9,9	9,3	8,45	t															



**Lest de contre-flèche**

**Gegenauslegerballast**

**Counter-jib ballast**

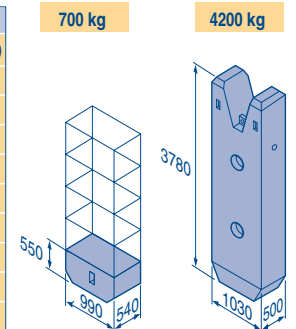
**Lastre de contra flecha**

**Contrappeso**

**Lastros da contra lança**

LVU 2

	50 LVF - 75 LVF - 100 LVF	150 LCC					
		4200 kg	700 kg	(kg)	4200 kg	700 kg	(kg)
75 m	24,2 m	5	2	22 400	4	5	20 300
70 m	24,2 m	4	4	19 600	4	1	17 500
65 m	24,2 m	4	2	18 200	3	5	16 100
60 m	24,2 m	3	4	15 400	3	1	13 300
55 m	24,2 m	3	2	14 000	2	5	11 900
50 m (B60A)	24,2 m	3	-	12 600	2	4	11 200
50 m	18,2 m	5	2	22 400	4	5	20 300
45 m	18,2 m	4	4	19 600	4	1	17 500
40 m	18,2 m	4	1	17 500	3	4	15 400



**Lest de base - Grundballast**

**Base ballast - Lastre de base**

**Zavorra di base - Lastros da base**

LVU 1

□ 2 m	V 60 A	H (m)	Base ballast (t)												
			69,8	66,5	61,5	56,5	51,5	46,5	41,5	36,5	31,5	26,5	21,5	16,5	
			108	108	108	108	108	108	108	96	96	96	96	84	84

**Ancrages**

**Verankerungen**

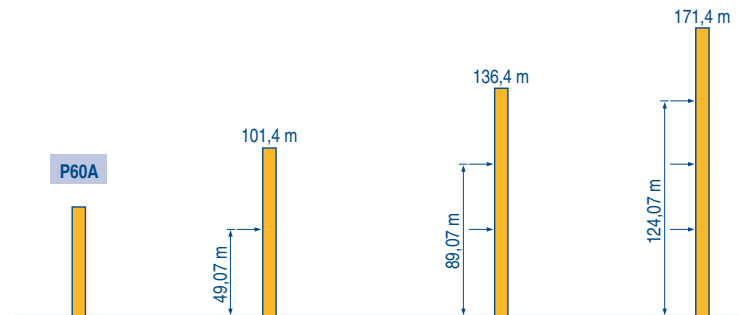
**Anchorage**

**Anclaje**

**Ancoraggio**

**Ancoragem**

LVU 1






**TOPKIT  
MD 345 B L12**

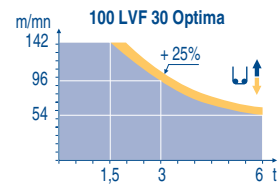
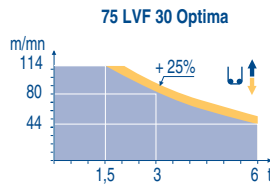
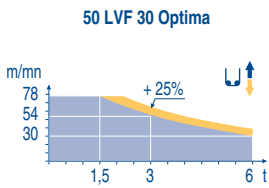
















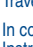















A	F	D	GB	E	I	P
Distance entre cadres	Abstand zwischen den Rahmen	Distance between collars	Distancia entra marcos	Distanza fra i telai	Distância entre quadros	
H1	Hauteur grue	Kranhöhe	Crane height	Altura grúa	Altezza gru	Altura da grua
P	Poids de la grue (en service)	Krangelicht (in Betrieb)	Crane weight (in service)	Peso de la grúa (en servicio)	Peso della gru (in servizio)	Peso da grua (em serviço)
R	Réaction horizontale	Horizontalkräfte	Horizontal reaction	Reaccion horizontal	Reazione orizzontale	Reacção horizontal
	Voir télescopage sur dalles	Siehe Kletterkrane im Gebäude	See climbing crane	Veja grua trepadora	Consultare gru in cavedio	Ver telescopagem sobre lages


Mécanismes  
Antriebe  
Mechanisms  
Mecanismos  
Meccanismi  
Mecanismos

LYU 3

		↙ ↑					↘ ↑					ch - PS hp	kW				
▲	50 LVF 30 Optima	m/min	2,4 → 9,6 → 30 → 38 → 54 → 78						1,2 → 4,8 → 15 → 19 → 27 → 39						50	37	340 m
		t	6 6 6 4,5 3 1,5						12 12 12 9 6 3								
	75 LVF 30 Optima	m/min	0 → 44 → 56 → 80 → 114						0 → 22 → 28 → 40 → 57						75	55	570 m
		t	6 6 4,5 3 1,5						12 9 6 3								
●	100 LVF 30 Optima	m/min	0 → 54 → 68 → 96 → 142						0 → 27 → 34 → 48 → 71						100	75	1019 m
		t	6 6 4,5 3 1,5						12 9 6 3								
●	150 LCC 30	m/min	86 → 103 → 129 → 172 → 206						43 → 52 → 65 → 86 → 103						150	110	652 m
		t	6 4,5 3 1,5 0,75						12 9 6 3 1,5								
◀ ▶	6 DVF 4	m/min	0 → 50 (12 t) 0 → 100 (6 t) 0 → 120 (3 t)										5,5	4			
●	RVF 182 Optima	tr/min U/min rpm	0 → 0,7										2 x 12	2 x 9			
●	V 60 A RT 544 A1 2V R ≥ 13 m	m/min	13,5 - 27										4 x 7	4 x 5,2			
CEI 38 		IEC 38		kVA													
400 V (+6% -10%) 50 Hz				50 LVF : 75 kVA 75 LVF : 100 kVA 100 LVF : 125 kVA 150 LCC : 175 kVA										2000/14			



F	D	GB	E	I	P
					
Levage	Heben	Hoisting	Elevación	Sollevamento	Elevação
					
Distribution	Katzfahren	Trolleying	Distribución	Distribuzione	Distribuição
					
Orientation	Schwenken	Slewing	Orientación	Rotazione	Rotação
					
Translation	Kranfahren	Travelling	Traslación	Traslazione	Translação
					
Conforme aux directives CEE sur le niveau acoustique	Gemäss EWG-Richtlinien für den Schall-Leistungspegel	In compliance with the EEC Instructions on noise level	Conforme con las directivas CEE sobre el nivel acustico	Conforme alle direttive CEE sul livello acustico	Conforme as directivas CEE sobre o nível acústico

 Document commercial non contractuel. Pour toute information technique se référer à la notice correspondante

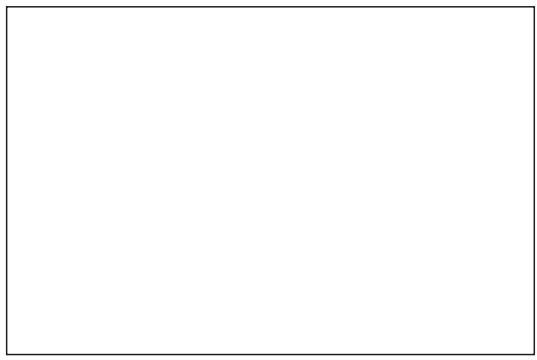
Unverbindliches Vertriebsdokument. Für technische Informationen, siehe die entsprechenden Anweisungen.

This commercial document is not legally binding. For any technical information, please refer to the corresponding instructions.

Documento commercial no contractual. Para cualquier información técnica, ver la noticia correspondiente.

Documento commerciale non vincolante, per tutte le informazioni tecniche fare riferimento al catalogo istruzioni

Documento comercial não contractual. Para qualquer informação técnica complementar consultar as respectivas instruções



**Americas**  
Tel: +1 920 683 6322  
Tel: +1 717 597 8121

**Europe - Middle East - Africa**  
Tel: +(33) 4 72 81 50 00  
Tel: +(44) 191 565 6281

**Asia - Pacific**  
Tel: +(65) 6861 7133  
Fax: +(65) 6862 4142

www.manitowoccrane.com

**18, rue de Charbonnières - B.P.173  
69132 ECULLY Cedex - France**

Tél. : (33) 4 72 18 20 20  
Fax : (33) 4 72 18 20 00  
www.manitowoccrane.com www.potain.com

**TOPKIT MD 345 B L12**  
Réf. 2003 48 LYU 3

Copyright.Reproduction interdite © POTAIN 2003

Réalisation Sedoc