



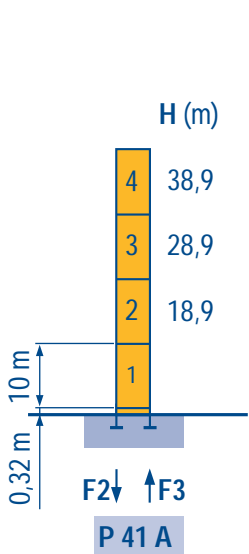
Mat / Réactions  
Maste / Eckdrücke  
City 1,6 m



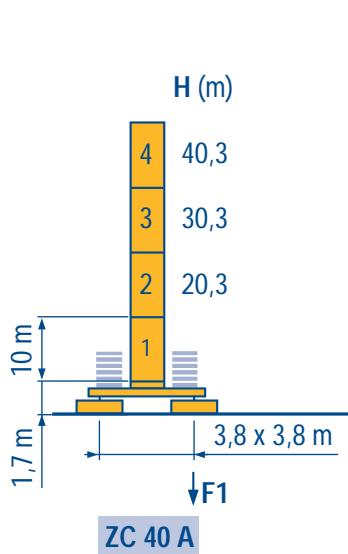
Masts / Reactions  
Mástil / Reacciones  
City 1,6 m



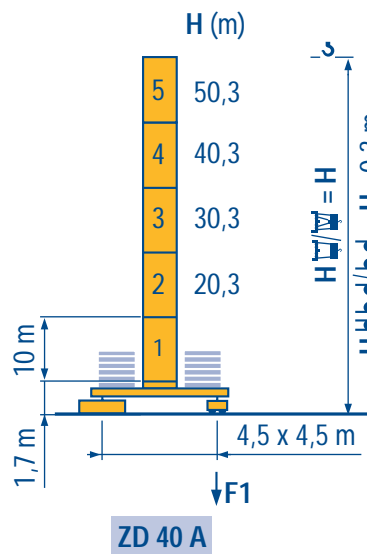
Torre / Reazioni  
塔身/反力  
City 1,6 m



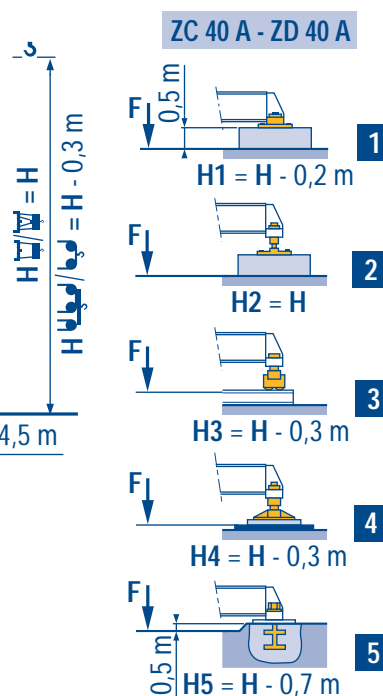
F2	● 80 t	■ 88 t
F3	● 54 t	■ 64 t
	31 t	



F1	● 58 t	■ 63 t
	35 t	



F1	● 65 t	■ 83 t
	40 t	



F1	● 65 t	■ 83 t
	40 t	

LNQ 1

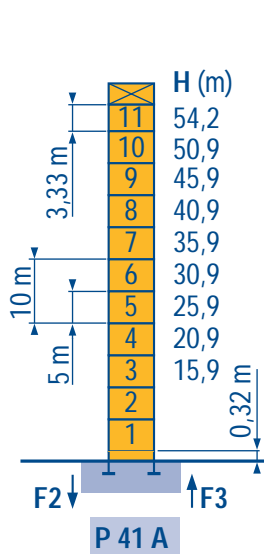
Télescopable 1,6 m  
Teleskopierbar 1,6 m



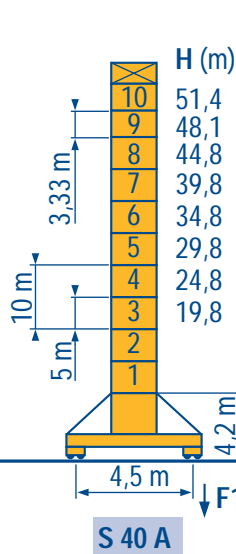
Telescopic 1,6 m  
Telescopico 1,6 m



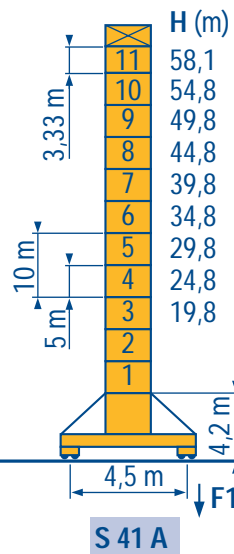
Telescopico 1,6 m  
可顶升 1,6 m



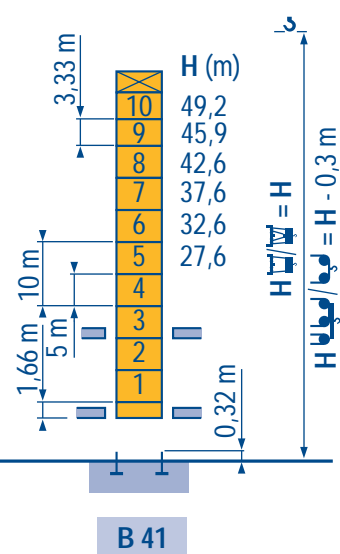
F2	● 115 t	■ 173 t
F3	● 81 t	■ 142 t
	46 t	



F1	● 73 t	■ 96 t
	50 t	



F1	● 86 t	■ 121 t
	54 t	



LNQ 1

Voir télescopage sur dalles  
● Réactions en service  
■ Réactions hors service  
 A vide sans lest avec flèche et hauteur maximum.



See climbing crane  
Reactions in service  
Reactions out of service  
Without load and ballast with longest jib and maximum height.



Consultare gru in cavedio  
Reazioni in servizio  
Reazioni fuori servizio  
A vuoto senza zavorra e con braccio massimo e altezza massima.



Siehe kletterkrane im gebäude  
● Reaktionskräfte in Betrieb  
■ Reaktionskräfte außer Betrieb  
 Ohne Last und Ballast mit Maximalausleger und Maximalhöhe.

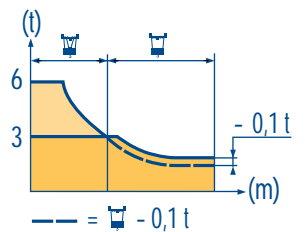
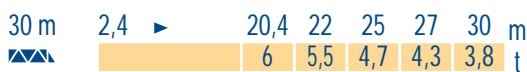
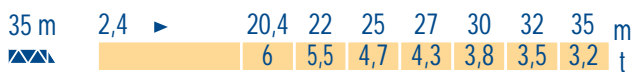
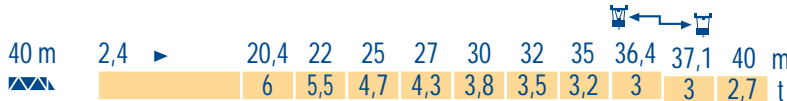
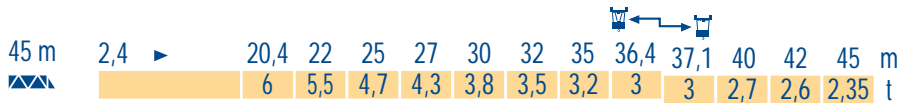
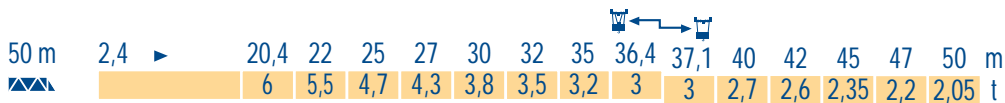
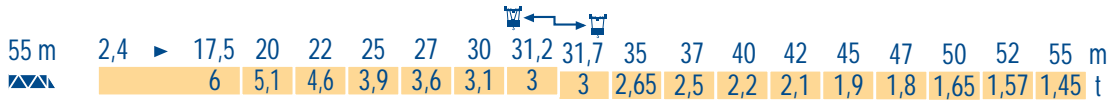
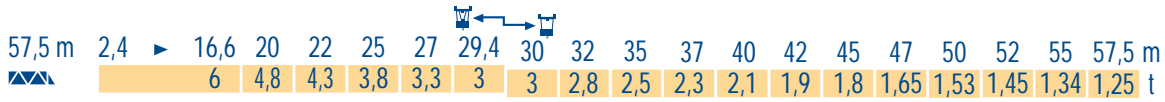
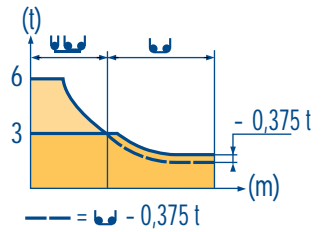
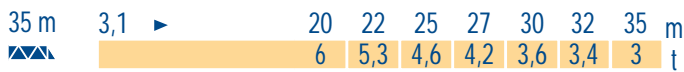
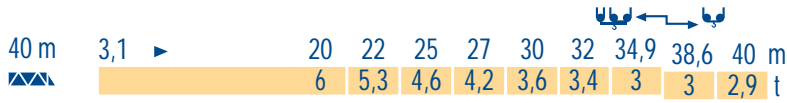
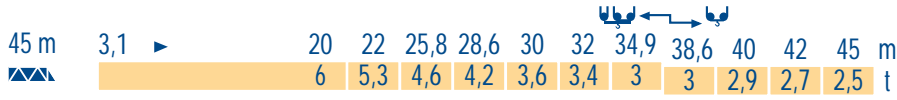
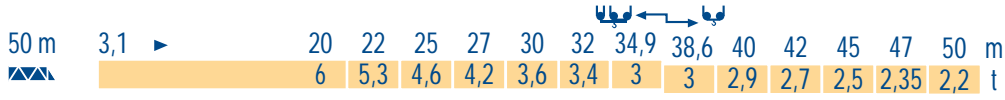
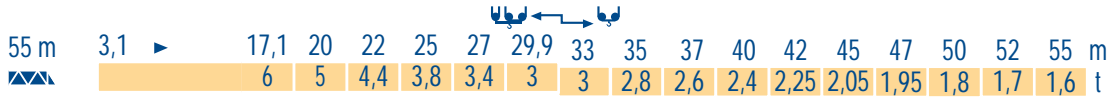
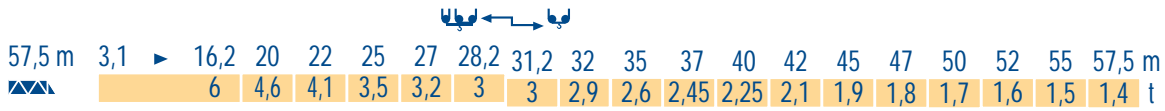


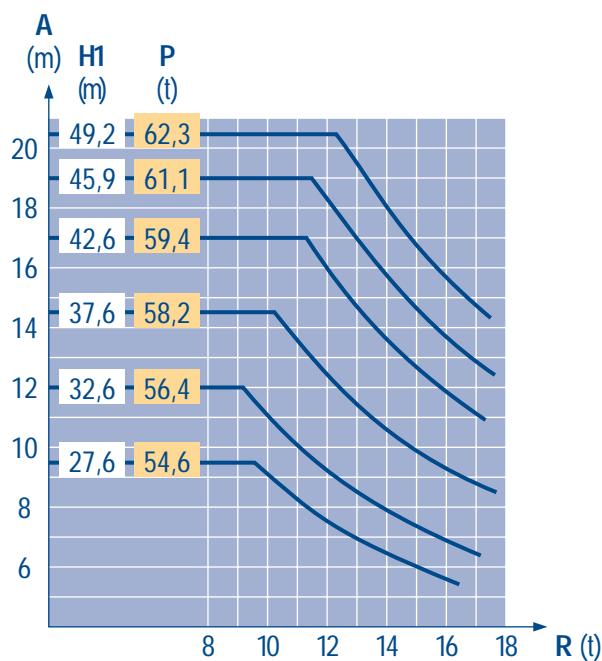
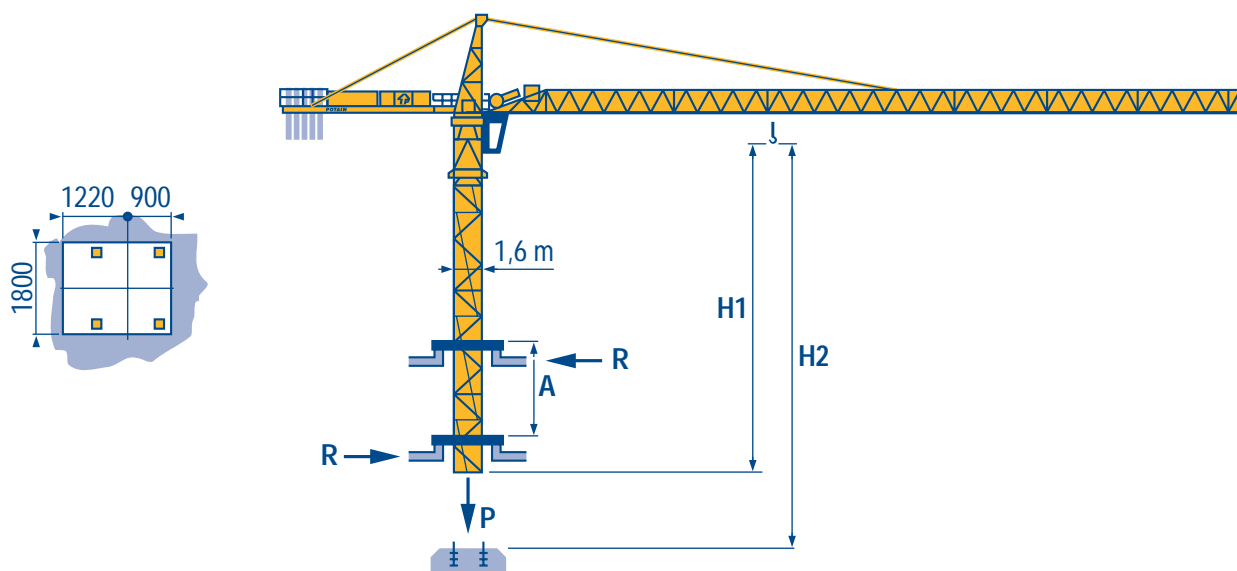
Vea grua trepadora  
Reacciones en servicio  
Reacciones fuera de servicio  
Sin carga, sin lastre con flecha y altura máxima.



見楼板顶升  
工作状况下的反应  
非工作状况下的反应  
空载, 无配重, 起重臂和高度均为最大值







LNQ 1

A Distance entre cadres

H1 Hauteur grue

P Poids de la grue (en service)

R Réaction horizontale

F Distance between collars

Crane height

Crane weight (in service)

Horizontal reaction

GB Distanza fra i telai

Altezza gru

Peso della gru (in servizio)

Reazione orizzontale

A Abstand zwischen den Rahmen

H1 Kranhöhe

P Krangewicht (in Betrieb)

R Horizontalkräfte

D Distancia entra marcos

Altura grúa

Peso de la grúa (en servicio)

Reaccion horizontal

E 各附着框之间距离

工作状态 下塔机高度

工作状态 下塔机重量

水平反力

Lest de contre-flèche  
Gegenauslegerballast



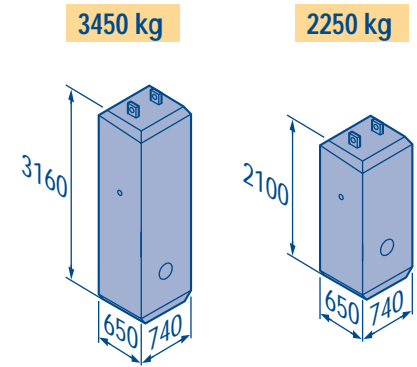
Counter-jib ballast  
Lastre de contra flecha



Contrappeso  
平衡臂重



		3450 kg	2250 kg	(kg)
57,5 m	14,3 m	5	-	17 250
55 m	14,3 m	4	1	16 050
50 m	13 m	4	1	16 050
45 m	13 m	3	2	14 850
40 m	13 m	4	-	13 800
35 m	13 m	3	1	12 600
30 m	13 m	2	2	11 400



LNQ 1

Lest de base  
Grundballast



Base ballast  
Lastre de base



Zavorra di base  
压重



∅1,6 m	ZC 40 A ◀●▶	H (m)	40,3	30,3	20,3						
		(t)	65	60	55						
∅1,6 m	ZD 40 A ◀●▶	H (m)	50,3	40,3	30,3	20,3					
		(t)	70	55	45	45					
∅1,6 m	S 40 A ◀●▶	H (m)	51,4	48,1	44,8	39,8	34,8	29,8	24,8	19,8	
		(t)	84	72	54	36	36	36	36	36	
∅1,6 m	S 41 A ◀●▶	H (m)	58,1	54,8	49,8	44,8	39,8	34,8	29,8	24,8	19,8
		(t)	114	102	78	54	36	36	36	36	36

LNQ 1

		U				UU				ch - PS hp	kW		
	33 PC 15	m/min	—	6	37,5	75	—	3	19	37,5	33	24	320 m > 320
		t	—	3	3	1,5	—	6	6	3			
	33 LVF 15	m/min	4,6	12	37,5	75	2,3	6	19	37,5	33	24	320 m > 320
		t	3	3	3	1,5	6	6	6	3			
	45 RCS 15	m/min	—	—	0 → 52,5	0 → 105	—	—	0 → 26	0 → 52	45	33	472 m > 472
		t	—	—	3	1,5	—	—	6	3			
	4 D3 V3	m/min	15 - 30 - 58								4	3	
	RCV 145	tr/min U/min rpm	0 → 0,8								2 x 6	2 x 4,4	
ZC 40 A ZD 40 A 	RT 224	m/min	25								2 x 4	2 x 2,9	
S 40 A 	RT 324	m/min	12,5 - 25								2 x 7	2 x 5,2	
	TCV 449 ARC R ≥ 10 m H ≤ 34,8 m	m/min	10 - 50								4 x 6,8	4 x 5	
S 41 A 	RT 443 A1 2V	m/min	15 - 30								4 x 5	4 x 3,7	
	TCV 449 ARC R ≥ 10 m H ≤ 34,8 m	m/min	10 - 50								4 x 6,8	4 x 5	

CEI 38	IEC 38	<b>kVA</b>	
400 V (+6% -10%) 50 Hz		33 PC : 50 kVA 33 LVF : 50 kVA 45 RCS : 65 kVA	84/534 - 87/405

LNQ 1

Levage Distribution Orientation Translation Conforme aux directives CEE 84/534 et 87/405 sur le niveau acoustique Nous consulter	<b>F</b>	Hoisting Trolleying Slewing Travelling In compliance with the EEC 84/534 and 87/405 Instructions on noise level Consult us	<b>GB</b>	Sollevamento Distribuzione Rotazione Traslazione Conforme alle direttive CEE 84/534 e 87/405 sul livello acustico Consultateci	<b>I</b>
	Heben Katzfahren Schwenken Kranfahren Gemäss EWG-Richtlinien 84/534 und 87/405 für den Schall-Leistungspegel Auf Anfrage	<b>D</b>	Elevación Distribución Orientación Traslación Conforme con las directivas CEE 84/534 y 87/405 sobre el nivel acustico Consultarnos	<b>E</b>	起升 变幅 回转 行走 符合 CEE 84/534 - CEE 87/405 声晌度规定 请向我方咨询

Réf. 1997.48 LNQ 1



18.Rue de Charbonnières, B.P. 173-F  
69132 ECULLY Cedex  
Tél. (33)04.72.20.20.20  
Fax (33)04.72.20.20.00  
http://www.potain.fr  
E-mail : mkt@potain.fr

**CITY CRANE MD 125 A**

Copyright.Reproduction interdite © POTAIN 1997

**Deutschland**  
POTAIN GmbH Tel : 06.105.704.0  
**Italia**  
POTAIN S.p.A. Tel : 039.65.631  
**China**  
Zhangjiagang POTAIN Tel : 520. 877.1451

Modificazioni riservate / Modificaciones reservadas / Subject to modification / Änderungen vorbehalten / Modifications réservées / 修改权在我方 / Printed in France / Réalisation SODIPE